

RootReport: Spotlight on Ginseng

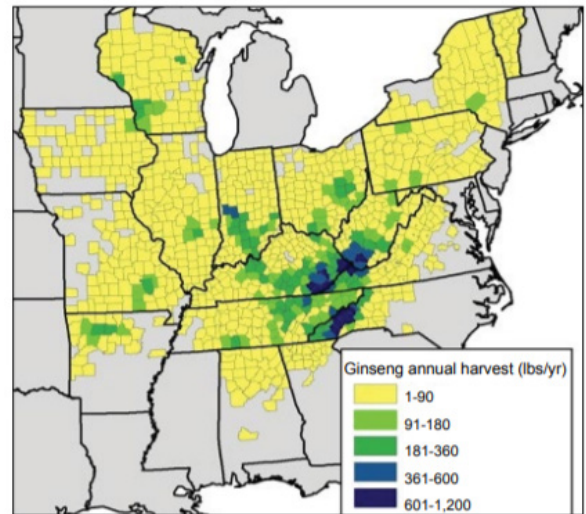


RootReport does not collect data from participants on ginseng, but people expressed to see data on ginseng harvests. We assembled this report from publications and other resources as a service, especially for those who do not purchase other species.

Sources

We collected data from a scientific journal, and from reports published or compiled by the US Forest Service. These rely on information collected by state ginseng programs and submitted to the US Fish and Wildlife Service.

The map to the right shows the average annual ginseng harvests at the county level from 2000-2007. Amounts were dry or converted to dry pounds. Harvesting intensity was greatest in the coalfields of central Appalachia and western North Carolina.



-From Chamberlain et al. 2013 published in *Journal of Sustainable Forestry* 32(6)

The table below shows the total amount of ginseng harvested by state in dry pounds from 2015-2017, the average annual harvest during that period, and the rate of change between 2015 and 2017. The states are ordered by harvest total. Kentucky was the state producing the most ginseng, followed by West Virginia, Tennessee, North Carolina, and Indiana. The trend from 2015 to 2017 was down, from 66,284 dry pounds to 49,507 dry pounds, a drop of 39%.

The average roots per dry pound reported by states in 2017, and the percentage of total pounds reported as dry are presented in the table below. Some states did not provide roots per pound or did not distinguish between fresh and dry material in their reports. Percent bought dry varied a great deal, from 97 percent in Illinois to 2 percent in New York.

State/Tribe	2015	2016	2017	Average	Change from 2015-2017
KY	14,533	8,413	8,400	10,449	-42%
WV	8,056	6,404	6,044	6,835	-25%
TN	8,725	4,432	5,498	6,218	-37%
NC	7,420	5,514	5,370	6,101	-28%
IN	5,590	3,833	3,283	4,235	-41%
OH	4,870	2,856	3,001	3,576	-38%
VA	4,081	2,360	2,433	2,958	-40%
IL	3,965	1,746	1,278	2,330	-68%
MN	1,950	630	1,114	1,231	-43%
PA	1,337	1,054	1,094	1,161	-18%
WI	1,295	702	591	863	-54%
MO	1,242	792	491	842	-61%
IA	558	1,152	385	698	-31%
AR	747	387	660	598	-12%
NY	718	538	403	553	-44%
AL	532	231	327	363	-39%
GA	335	132	204	224	-39%
MD	225	111	56	131	-75%
Menominee		126	63	95	n/a
VT	104	78	53	78	-49%
Total	66,284	41,490	40,748	49,507	-39%

Table 1: Data from US Fish and Wildlife Service, courtesy of James Chamberlain, USDA Forest Service

State	Roots Per Pound	Percent Bought Dry
AR	250	93%
AL	119	n/a
GA	140	39%
IA	135	28%
IL	n/a	97%
IN	311	n/a
KY	284	83%
MD	363	91%
MN	150	64%
MO	183	n/a
NC	314	34%
NY	160	2%
OH	327	56%
PA	127	65%
TN	216	65%
VA	213	n/a
VT	130	n/a
WI	114	25%
WV	225	49%

Average Roots Per Pound 209

Table 2: Data from US Fish and Wildlife Service, courtesy of James Chamberlain, USDA Forest Service



Steve Kruger, Postdoctoral Associate
skruger@vt.edu / 828-719-9477

John Munsell, Associate Professor
and Extension Specialist

Department of Forest Resources and Environmental Conservation,